

Washer extractor

Wascator FOM71 CLS

Features and benefits 优势和特点:

- Meets IEC and ISO international standards
满足 IEC 和 ISO 国际标准
- Suitable for testing washing effects of detergents and chemicals and for textile quality control
适用于洗涤剂 and 化学品对织物水洗影响的测试，以及对纺织品质量的控制
- Suspended drum construction allows a high extraction force. No foundation required
悬挂式滚筒设计可承受较大的离心力。不需要额外的基架。
- Small space between outer/inner drum for efficient use of water and detergent
在内外滚筒间的空隙较小，可有效利用水资源和洗涤剂
- Dual water control of volume (weight) and level
双重水位和水量（重量）控制
- Built in scale for precise volume control, accuracy:
 - volume control +/- 0.2 litre/bath
 - level control +/- 0.8 litre/bath



内置刻度保证精确的水量控制，精确度分别为:

- 水量控制：+/- 0.2 升/池
- 水位控制：+/- 0.8 升/池
- Equipped with Clarus Control.- a fully programmable electronic timer
配有 Clarus 控制——一种完全程序控制的电子计时装置
- Frequency controlled motor system for flexibility in programming and precise speed
频率控制的马达系统，保证速度的灵活调控和精确性
- Test tap for water samples
水样测试龙头
- Stainless steel drum assembly, front, side and top panel
不锈钢滚桶结构，并配有前部、两侧以及顶部面板

Main options 主选配件

- WPM (Wash Program Manager) PC programming kit in Windows
支持 Windows 系统的 WPM（洗涤程序管理器）程序包
- Extra program memory cards
额外的程序记忆卡

Main specifications 主要特征	Wascator FOM71 CLS
Drum volume litre 滚筒容量，单位 升	61
diameter mm 直径 单位 毫米	520
Extraction, max rpm 最大离心力 单位 rpm	1100
G -factor, max 最大重力因素	350
Heating electricity kW 电热，单位 千瓦	5.4

Certified in accordance with ISO 9001 and ISO 14001 and approved IP 24D.

通过 ISO 9001 和 ISO 14001 认证

Electrical connections' 电气接线 **Wascator FOM71 CLS**

Heating 加热 Voltage 电压		
El .	230V 3AC Hz	kW(A) 5.7(16)
	400-415V 3N AC 50Hz	kW(A) 5.7(10)
	415V 3N AC 50 Hz	kW(A) 5.7(10)

Water and steam connection 水流接管

Water valves 水阀	DN	20
Water pressure 水压	kPa	150-400
Capacity at 300 kPa 在 300 千帕时的能力	l/min	20
Drain valve 排水阀	omin	50/75
Draining capacity 排水能力	l/min	150
Liquid detergent supplies 液体洗涤剂的供应		4

Floor requirements 对地板的要求

Frequency of the dynamic force 动力频率	Hz	18.3
Max floor load at extraction 脱水时地板承受的最大负荷	kN	1.6±0.5

Sound levels 噪音等级

Airborne sound level 空气中的噪音等级	dB(A)	71
-------------------------------	-------	----

Shipping data 仓储数据

Weight	净重 net. kg	195
	毛重 crated, kg	211
Shipping volume 运输体积	m3	0.89

Accessories 配件

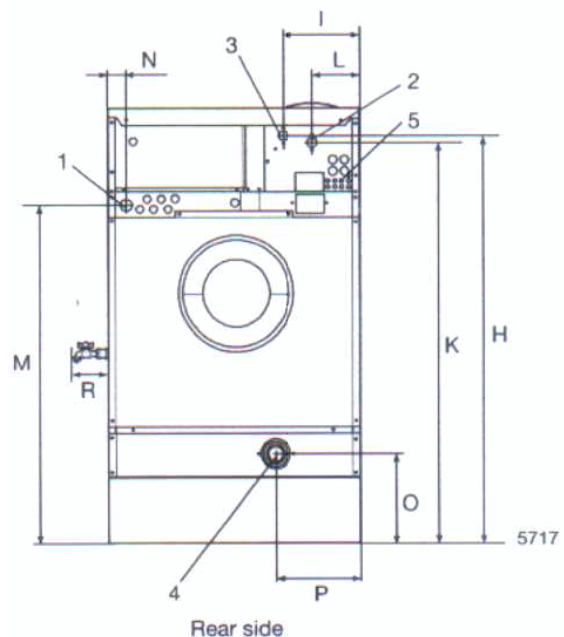
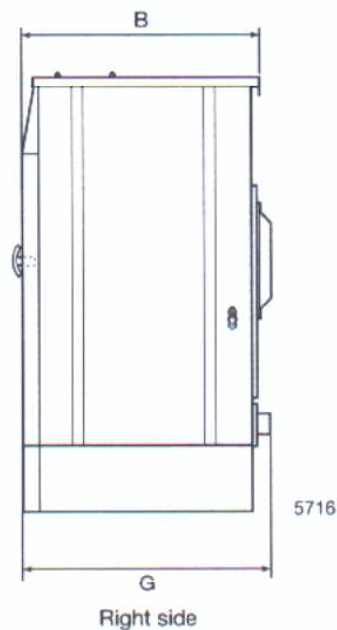
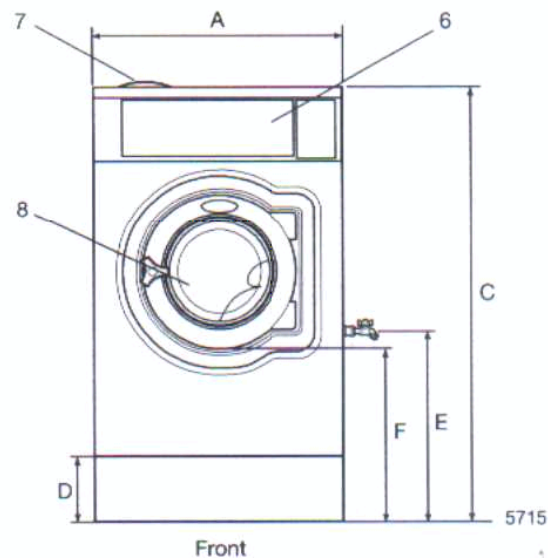
Hose connection kit for water 进/出水软管连接配件	x
--	---

Dimensions in mm 机器尺寸 单位 毫米

A. Width 宽	720
B. Depth 厚	690
C. Height 高	1315
D	200
E	750
F	555
G	720
H	1230
I	220
K	1010
L	135
M	825
N	45
O	100
P	240
R	135

- 1.Electrical connection connections 电气连接
- 2.Cold water 冷水
- 3.Hot water 热水
- 4.Drain opening 排水开关
- 5.Liquid supply 进水

- 6.Control panel 控制面板
- 7.Soap box 洗涤剂盒
- 8.Door 门



Function/subsystem 功能

Ambient conditions	
<p>The machine shall be able to function during the same ambient conditions as normal washing machines. The functional values with tolerances will be valid if following ambient conditions are kept. 在与平时洗衣机相同的环境下，该机器可正常运作。如下列环境参数保持在正常范围内，该机器的误差将落在可接受的范围内。</p> <p>Voltage 电压 / Frequency 平率 Inlet water Cold / Hot 进水温度：冷水 / 热水 Water pressure 水压 Ambient temperature 周围温度</p>	<p>Nominal $\pm 2\%$ / Nominal $\pm 2\%$ (15\pm2) C / Max (60 \pm2) C (240\pm50) kPa (20\pm5) C</p>
Inner drum 内滚筒	
<p>Diameter 直径 / Depth 深度 Volume 体积 Lifting vanes : Number 提升片：数量 Height 高度 Radius 半径 Base width 基座宽度 Perforation: Diameter 脱水孔：直径 Depth of countersink 凸缘深度 Total hole area 脱水孔板总面积 Material: Stainless steel 材料：不锈钢</p>	<p>(520\pm1)mm / (315\pm1)mm 61 3 53mm 17mm 65mm 5mm 2.5mm 600cm² 2333(SS18/8)</p>
Outer drum 外滚筒	
<p>Diameter 直径 / Sump 集水 Material: Stainless steel 材料：不锈钢</p>	<p>554mm / ~ (1300\pm25) ml 2333 (SS 18/8)</p>
Door opening 门	
<p>Opening diameter 直径</p>	<p>310mm</p>
Cabinet 柜	
<p>Stainless steel 不锈钢</p>	<p>2333 (SS 18/8)</p>
Drum speed 滚筒速度	
<p>Washing speed: Programmable 洗涤速度：程控 Extraction: Programmable 脱水速度：程控</p>	<p>(20-59\pm1)RPM (200-1100\pm20)RPM</p>
Reversing rhythm 反转节奏	
<p>Programmable 程控</p>	<p>(0-250\pm0.1) = sec.(Tolerance area refers to timer intervals 公差范围请参考时间间隔)</p>
Water level 水位	
<p>Weight sensing 水量传感 Repeatability 可重复性 / Stepsize 级差 Dosing accuracy weight control 根据水量精确投料 Level sensing: 水位传感 Repeatability 可重复性 / Stepsize 级差 Dosing accuracy level control 根据水量精确投料</p>	<p>$\leq \pm 0.1$kg/bath / 0.05kg $\leq \pm 0.2$kg/bath $\leq \pm 5$mm / 3mm $\leq \pm 0.8$litre/bath</p>

Thermostat 自动调温器	
Continuos variable in each wash 每次洗涤可分别设置 Selectable interval 可选范围 Programming steps 程控级差 Switch off temperature accuracy in Interval 30-97 C Interval switch off temperature - switch on temperature	Yes (4-97) C 1 C ± 1 C ≤ 4 C
Soap box 洗涤剂盒	
Number of compartments 间隔数量 Number of programmable liquid detergents 可编程洗涤液数量	4 4
Wash programs 洗涤程序	
Fully programmable wash programs 完全程序控制的洗涤程序 Memory cards for 记忆卡	Clarus IEC 60456 ISO 6330 M&S
Approvals 认可	
The machine shall have same approvals as normal washing machines 该机器与普通洗衣机应有同样认证	CE, cETLus
Special equipment 特殊装备	
Manual tap for sampling of bath water on right side: 洗涤水手动取样龙头位于右侧 Connection for temperature recording sensor in rear gable: 温度传感器连接线位于后方 Possibility to connect lint trap: Memory card with copy safe programs for M&S and (IEC; ISO): M&S and (IEC; ISO) 记忆卡 Procedure for calibration of the machine according to ISO 9000 rules: 根据 ISO 9000 的标准, 该机器有校准程序 Possibility to take out test pieces from wash bath during the wash: 在洗涤过程中, 可从洗涤池中取出测试物件 Analog output from load cells to data acquisition systems: 数据输出	yes yes yes yes yes yes yes

Pre-programmed wash programs 预编洗涤程序

The Clarus Control in the Wascator FOM71 CLS contains 9 pre-programmed "wash programs".

They are not real wash programs but are mainly designated for checking purposes. The stored programs are :

在 Wascator FOM71 CLS 中的 Clarus 控制系统内含 9 种预编洗涤程序。

它们主要是根据测试目的而设定, 而非真实洗涤程序。内含的程序包括:

Place	Name 名称	Content 内容
991	Start-up Programme 起始程序	Flushes the machine with water. Shall be used if the machine has been idle for more than 2 hours. 清水冲洗机器。如机器闲置 2 小时以上, 必须使用该程序。
992	Level check 水位测试	Checking of the level. With ruler inside the machine fills to 100 mm, 130 mm, 160 mm, and 200 mm. 测试水位。内置标尺, 注水至 100 mm, 130 mm, 160 mm 和 200 mm.
993	Weight check 水量测试	Machine fills water to 18kg and to 26kg. 机器注水 18~26 公斤
994	Temperature check 温度测试	Check of the temperatures at 250C, 400C, 600C and 900C 2 minutes at each temperature. 在 250C, 400C, 600C and 900C 测试温度, 每个温度各 2 分钟
995	Extraction 脱水	500 RPM 1 min
996	Extraction 脱水	500 RPM 5 min
997	Extraction 脱水	775 RPM 2 min
998	Extraction 脱水	950 RPM 4 min
999	Extraction 脱水	1100 RPM 5 min



LIBERO
Testing Equipment
測試設備

理寶科技有限公司 Libero Technology Limited
 香港 HongKong Tel: +852-2555 8222 Fax: +852-2518 0115
 上海 Shanghai Tel: +86-21-5655 8285 Fax: +86-21-5655 7752
 北京 Beijing Tel: +86-10-6219 4585 Fax: +86-10-6219 4577
 青島 Qingdao Tel: +86-532-8584 8516 Fax: +86-532-8584 8516
 廣州 Guangzhou Tel: +86-20-8481 5667 Fax: +86-20-8488 5923
 Web Site: <http://www.liberohk.com> Email: sales@liberohk.com